

en*g*eodesy

worldwide engineering and surveying solutions



wherever you are

en*g*eodesy is the result of 20 years of global experience in engineering and construction of railways, roads, bridges, dams, pipelines, electrical line, refineries.

We manage data that is critical to the success of your project.
The success of your project is our success.

www.engeodesy.com

16 Boulevard Bineau 92300, Levallois - Perret, Île-de-France, France
engeodesy@engeodesy.com

Level 4,44 Miller Street, North Sydney, NSW 2060, Australia
info@engeodesy.com

enGeodesy

worldwide engineering and surveying solutions



VISION

Creating a tailor-made service for our customers through the acquisition and analysis of spatial and engineering data from design to construction.



MISSION

Constantly improving our services by making them personalized for our clients through our teams, our knowledge, and the best technologies.

enGeodesy offers technical support, engineering, and surveying, at any stage of the project including:

conformity analysis among contract, project, and bill of quantities

coordination with client's engineering firm in order to develop, to integrate and modify construction phase

coordinating and editing of technical and economic analysis for variants

site surveying

surveying coordination connecting site manager, engineering team and surveying teams

provide surveying teams for any kind of project



Construction monitoring



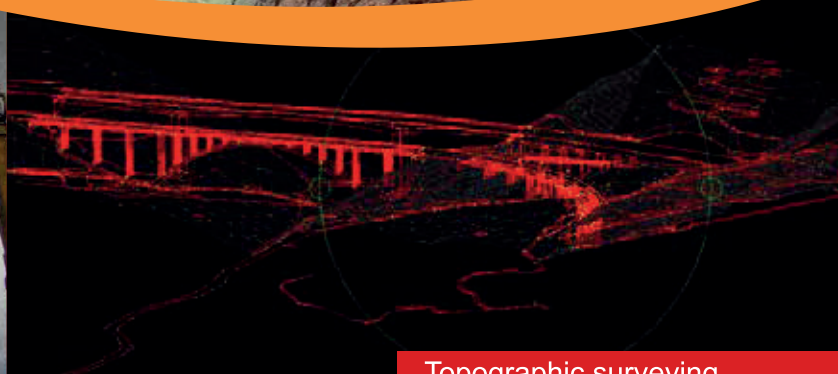
Environmental monitoring



Construction surveying service



Dimensional control



Topographic surveying





surveying

2020 - Ongoing. Tunnel Laser Scanner service - PORR - PFONS - Austria.
Monitoring and as-built surveying about 15 km tunnel construction.

2019 - ongoing Topographic Surveying Monitoring and service - Le Grand Paris - France.
New topographic net realised by GNSS observation and levelling on Line 17, building monitoring, structure staking, topographic assistance tunnel construction Line 15

2019 Topographic Surveying service - Saras spa - Sarroch - Italy.
Topographic assistance in order to build a new docking pier at oil&gas refinery.

2015-2016 Surveying coordination pipeline construction. SICIM spa. Mexico.
Surveyor supervisor supply. Pipeline project. Management surveying teams activities, data processing, about construction and installation 184 km pipeline infrastructure. Los Ramones Fase 2. San Luis Potosi.

2015 - 2020 Railway surveying - Italy
Surveying as-built about new noise barrier and new railway construction Martinsicuro, Alba Adriatica, Rimini, Faenza, Verona

2014 Topographic Surveying highways design. SPEA spa. Italy.
Carry out and measure GNSS systems, geodetic and topographic networks. Photogrammetric surveying. Highway Passante Nord. Bologna.

2013 Topographic surveying. Geo - Metric surveying. SEYMOUR WHITE. Australia.
Full services surveying assistance; stakeout, surveying, data processing, DTM, A6 Flinders Hwy restore. Charters Towers site.

2013 Topographic surveying service. GMF Contractors. Australia.
Stakeout, surveying, data processing, DTM. Site surveyor in different site such as roads, cars parks, build construction. Perth WA.

major works carried out

2012 Design and coordination GNSS surveying. ELECTROCONSULT spa. Italy.
Management and coordination of surveying about new electrical line Sirsnik – Deraluk, Kurdistan (Iraq).

2006 - 2012 Surveying coordination and surveying teams supply "Experimental project Kashagan Piles & Flares". SAIPEM spa. Kazakhstan.
Surveyors superintendent. Offshore project. Management surveying teams activities, data processing, about construction and installation oil and gas infrastructure on artificial atoll. D-Island, Caspian sea, Kazakhstan.

2005 - 2012 Topographic Surveying about highways design. SPEA spa – SATAP spa. Italy.
Carry out and measured by GNSS systems, Total Station, Digital Level, geodetic and topographic networks. Topographic surveying and digital graphic restitution at reference scale 1:500, surveying of primary and secondary structures, photogrammetric surveying. Highway A14, A1, A13, A11, A12, E50, BRE.BE.- MI, A4, A12.

2006, 2006, 2008, 2016 Subsidence monitoring. AGIP spa. Italy. High precision levelling of monitoring. KM 1000. 2007 Surveying about pipe line design. SNAM spa. Italy.
Surveying and digital graphic restitution of gas pipeline Poggio Renatico (BO) – Cremona.

2006 Topographic surveying road design. ENTE NAZIONALE STRADE FRANCESI. France.
Surveying and digital graphic restitution for extension work at Salon de Provence.

2001-2005 Topographic surveying service High Speed Railway Construction. RODANO CONSORTILE srl and MODENA srl Italy.
Topographic surveying service teams about railway construction "High speed railway Milano – Bologna"; surveying, stakeout of railway embankment primary and secondary structures, account surveying.

2005 Surveying tunnel monitoring. TOTO GROUP spa. Italy.
Surveying of work check, account surveying, surveying tunnel monitoring. Variante di Valico. Lotto 3. Vado.

2004 Surveying about pipeline design. SNAM. Italy.
Topographic surveying about new gas pipeline design. Forlì – Faenza.

2004 Highway surveying construction service. PAVIMENTAL spa. Italy.
Stakeout and topographic surveying about highway extension A1. Modena – Bologna.

Please note that companies mentioned are the actual concessionaires of the works described, therefore have been omitted any intermediary companies.



Road surveying service



Tunnel monitoring



Offshore surveying service



Railway engineering and monitoring

surveying

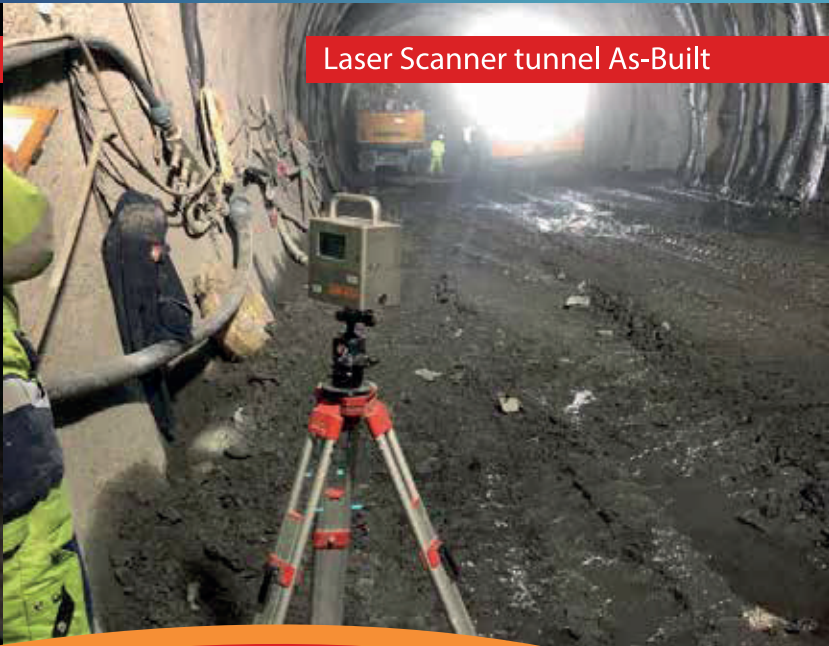


major works carried out

Engineering supply



Laser Scanner tunnel As-Built





engineering

major works carried out

2000-2001. Project Engineer about 30 Km segment of the High Speed Railway Milano - Bologna. SNAMPROGETTI ENI and CMC Ravenna. Italy.

Coordinating and development of the Project about environmental mitigation, relocation services, final safety of the new railway. Reggio Emilia.

2002-2003. Site Engineer and Project Engineer about 30 Km segment of the High Speed Railway Milan - Bologna SNAMPROGETTI ENI and CMC Ravenna. Italy.

Works include: railway and road overpasses, railway and road underpasses, drainage structures rectangular, square, railway viaducts, drainage box culverts rectangular, square, circle, roads and roundabout, retaining walls, embankments and earthwork formation, anchor bulkheads and sheet piles. Reggio Emilia.

2004-2006. Construction Engineer and Assistant Project Manager for the realization of the Calatrava's Projects. SNAMPROGETTI ENI and CMC Ravenna. Italy.

- n.1 steel arch bridge, with only one span 220 m long and 26 m wide cross section, 4000 tons of steel;
- n.2 cable-stayed bridges, with suspension structure of 180 m long and one central tower 70 m high, with a 14.50 m wide cross section, 1400 tons of steel in each;
- suspension cover for the new highway's toll house;
- new train station, in steel & glass, a tunnel 450 m long, 45 m wide, 16 m high. Reggio Emilia.

2007-2008 Consulting Engineer for REGGIO EMILIA MUNICIPALITY. Italy.

Consulting engineering and design. Projects such as: General Feasibility Study about infrastructure related to the implementation of

the new Sporting Arena, preliminary project of new roads and underpasses, updating the maintenance plan of the Calatrava's Bridges.

2009 Site Engineer and Project Engineer for New Southern Sydney Freight Line from Cabramatta to MacArthur. REED CONSTRUCTION AUSTRALIA. Australia.

2017 Cost Audit/Commercial services. West Connex M4 Widening. Rizzani De Eccher CPB Contractors JV, Sydney. Australia.

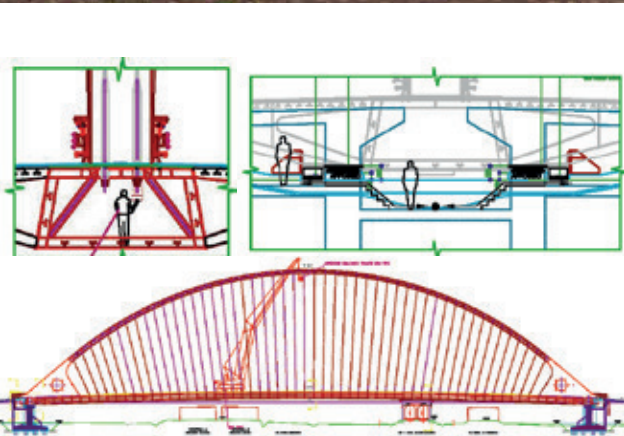
2018-2021 The Northern Road Stage 5&6 CPB Contractors, Sydney. Australia.
Procurement/Engineering/Commercial/Quantity Surveying services.

Please note that companies mentioned are the actual concessionaires of the works described, therefore have been omitted any intermediary companies.

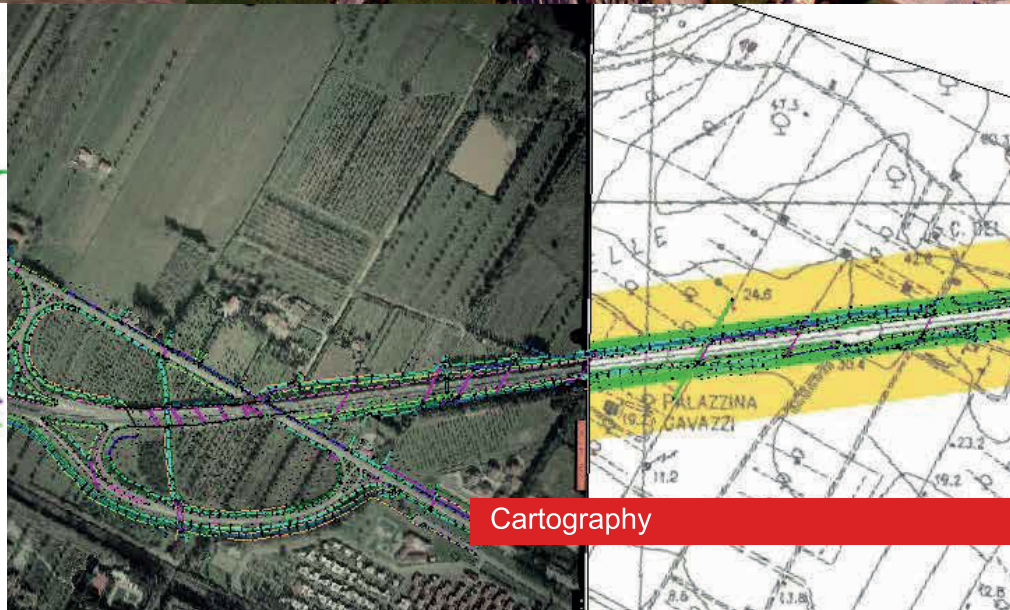
Construction delivery



Construction engineering support



Maintenance Plan



Cartography

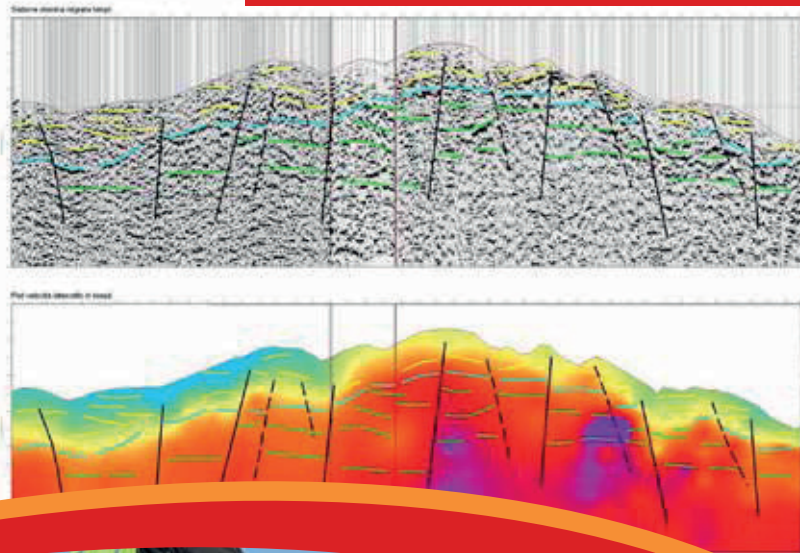
geophysics



Electrics cable and optical fibre detection



Seismic terrain characterization



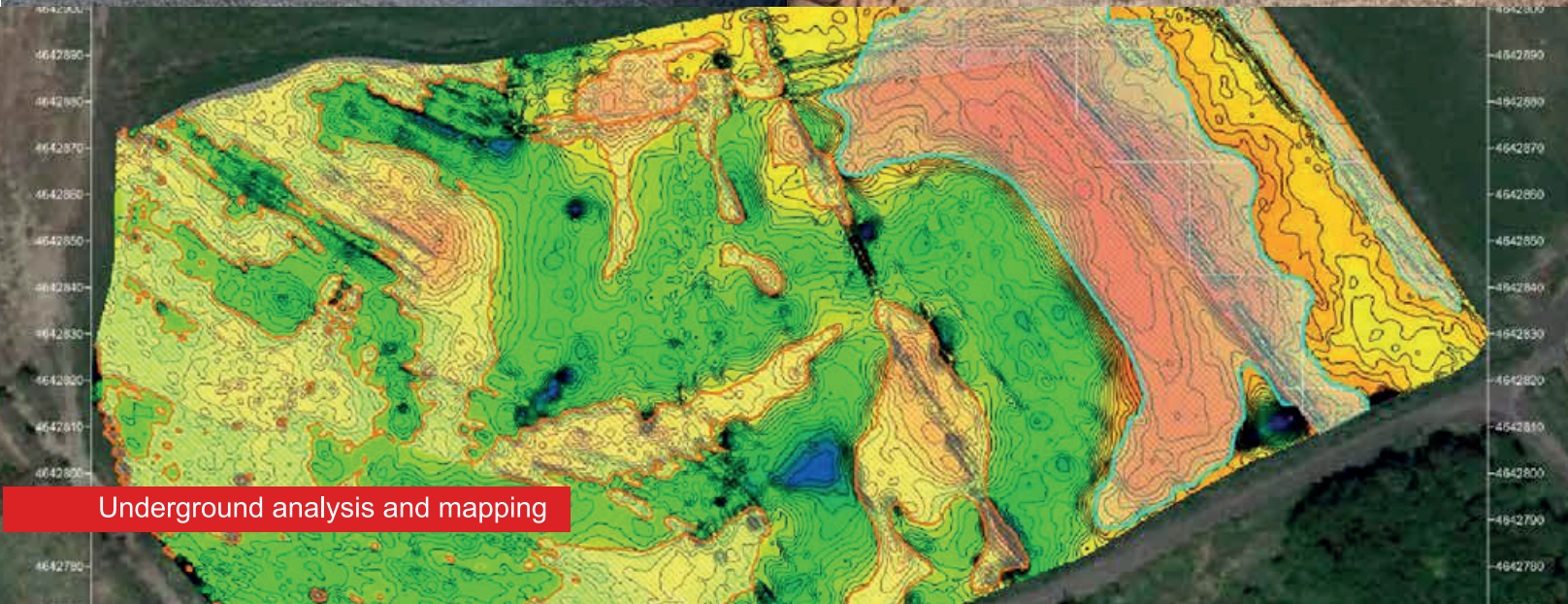
Georadar survey



Road surveying and ducts detection



Underground analysis and mapping



enGeodesy

worldwide engineering and surveying solutions

engineering



major works carried out

